

**Twenty Four COUNTRY DANCES** for the Year 1771.  
 With proper Tunes & Directions to each Dance, as they  
 are Performed at Court, Balls, & all Publick Assemblies. Price 6<sup>d</sup>

**L O N D O N**

Printed for Chas. & Saml. Thompson in St. Pauls Church Yard

Where may be had

200 Favourite Country Dances Bound	8	6
100 Favourite Minuets for the Harpsichord Violin or German Flute	3	6
3 Books of Favourite Hornpipes	3	6
Adams's Hymns & Anthems for Country Churches Bound	1	0
Instruction Books to learn the Violin, Flute, German Flute, Lute, Guitar,	5	0
French Horn, Harpsichord, Hautboy, Bagpipe, Flageolet, and Singing	1	6

Harvey, Mrs. F. E. D.

## Bromley Bells

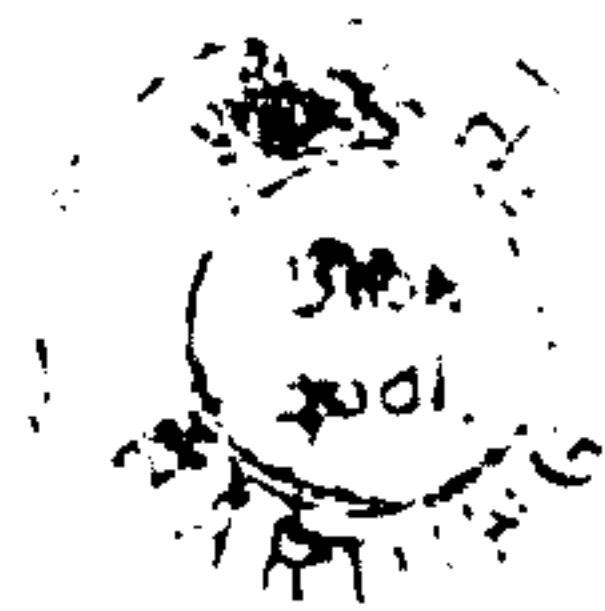
Musical score for 'Bromley Bells' (No. 1774). The piece is in C major, 2/4 time, and consists of 25 measures. It features a treble clef and a common time signature. The melody is characterized by eighth-note patterns and includes trills (tr) in measures 1, 3, and 5. The score is divided into two systems of two staves each, with repeat signs at the end of each system.

Right hands across ; Left hands back again ;  
 cast off 1 Cu. & turn 2<sup>d</sup> Cu. do the same ; lead  
 down 2 Cu. up 1 & Right & Left ;

## The Rainbow

Musical score for 'The Rainbow' (No. 13). The piece is in D major, 2/4 time, and consists of 26 measures. It features a treble clef and a key signature of one sharp (F#). The melody includes trills (tr) in measures 1, 3, and 5. The score is divided into two systems of two staves each, with repeat signs at the end of each system.

Set & change fides ; back again ; hands fix  
 half round & back again ; lead down one Cu.  
 Right & Left at top ;



# The Wedding Ring

Musical notation for 'The Wedding Ring' consisting of four staves. The first staff begins with a treble clef, a key signature of one flat (B-flat), and a 2/4 time signature. The number '27' is written below the first staff. The music features a rhythmic melody with eighth and sixteenth notes, and rests.

Right hands across Left hands back again ; crows over & back to back ; lead thro' the bottom the same thro' the top & cast off ; lead out sides ;

# The Recruits

Musical notation for 'The Recruits' consisting of four staves. The first staff begins with a treble clef, a key signature of one flat (B-flat), and a 2/4 time signature. The number '28' is written below the first staff. The music features a rhythmic melody with eighth and sixteenth notes, and rests. A 'w' symbol is present at the end of the first staff.

Right hands across quite round ; left hands back again ; crows over 1 Cu. & turn ; Right & Left ;

# The Fandango

Musical notation for 'The Fandango' in G major, 6/8 time. It consists of four staves of music. The first staff begins with a treble clef, a key signature of two sharps (F# and C#), and a 6/8 time signature. The number '29' is written below the first staff. The music features a mix of eighth and sixteenth notes, with some beamed eighth notes and a final double bar line with repeat dots.

Turn Right hands & cast off 1 Cu. : turn Left hands and cast off below the 3<sup>d</sup> Cu. : hands 6 round : lead up the middle & cast off 1 Cu. : turn corners & turn your Part: : the same at the other corners : Man whole figure at bottom & Wo. at top the same time : then the Wo. hey at bottom & Man at top :

# Miss Hamiltons Reel

15

Musical notation for 'Miss Hamiltons Reel' in G major, C time. It consists of four staves of music. The first staff begins with a treble clef, a key signature of two sharps (F# and C#), and a common time signature. The number '30' is written below the first staff. The music features a mix of eighth and sixteenth notes, with some beamed eighth notes and a final double bar line with repeat dots.

Cast off 2 Cu. : up again : lead down the middle up again & cast off : : fet corners & turn : the same at other corners : hey up & down & foot it out : :

Once a Night

The Dove Houfe

Musical notation for 'Once a Night' consisting of four staves. The first staff is in 6/8 time and begins with the number 31. The second and third staves contain repeat signs with first and second endings. The fourth staff concludes with a double bar line.

Musical notation for 'The Dove Houfe' consisting of four staves. The first staff is in 3/4 time and begins with the number 32. The second and third staves contain repeat signs with first and second endings. The fourth staff concludes with a double bar line and includes a triplet of eighth notes.

Cast off & hands 4 round with the 3<sup>d</sup>. Cu. ; cast up & hands 4 round at top ; figure down contrary sides then on your own sides ; lead down 2 Cu. & cast up lead thro' the top & cast up ;

Cast off 2 Cu. ; lead up and cast off ; hands 4 at bottom ; Right & Left at top ;

The French Affembly

Musical notation for 'The French Affembly' in G major, 3/8 time. The piece consists of four staves of music. The first staff begins with a treble clef, a key signature of one sharp (F#), and a 3/8 time signature. The number '33' is written below the first staff. The music features a mix of eighth and sixteenth notes, with some beamed sixteenth notes. The piece concludes with a double bar line and repeat dots.

Cranford lodge

17

Musical notation for 'Cranford lodge' in G major, 9/8 time. The piece consists of four staves of music. The first staff begins with a treble clef, a key signature of one sharp (F#), and a 9/8 time signature. The number '34' is written below the first staff. The music features a mix of eighth and sixteenth notes, with some beamed sixteenth notes. The piece concludes with a double bar line and repeat dots.

Allemand to the Right & cast off ; Allemand to the Left  
and cast up ; hands + acrofs quite round crofs over & turn ;  
hands 6 round back to back lead thro' the top & cast off ;

Cast off 2 Cu. ; up again ; crofs  
over 1 Cu. & turn ; Right and  
Left ;



The Frisky

Musical notation for 'The Frisky' consisting of four staves. The first staff is marked with the number 35. The music is in treble clef, key of D major (two sharps), and 6/8 time. It features a lively melody with eighth and sixteenth notes, ending with a double bar line and repeat dots.

The drefs'd Ship

Musical notation for 'The drefs'd Ship' consisting of four staves. The first staff is marked with the number 36. The music is in treble clef, key of D major (two sharps), and common time (C). It features a melody with eighth and sixteenth notes, ending with a double bar line and repeat dots.

Turn Right hands & cast off 1 Cu. :: turn Left & cast off below the 3<sup>d</sup> Cu. :: hands round 6 :: lead up to the top foot it & cast off ::

1<sup>st</sup> Man set to the 2<sup>d</sup> Wo. & turn :: 1<sup>st</sup> Wo. do the same :: cast off 1 Cu. & Allemand :: cast up & Allemand & lead down in the 2<sup>d</sup> Cu. place ::

# La Nouvelle Hambourgh

Musical notation for 'La Nouvelle Hambourgh' consisting of four staves. The first staff is in treble clef, key of D major (two sharps), and 2/4 time. It begins with the number '37'. The melody is a lively dance tune with many eighth and sixteenth notes.

Cast off 1 Cu. & turn : lead thro' the bottom & cast up : hands  
 6 round : lead thro' top & cast off : fet corners & turn : :  
 lead out sides : : . . . .

# Portsmouth Review

Musical notation for 'Portsmouth Review' consisting of four staves. The first staff is in treble clef, key of D major (two sharps), and common time (C). It begins with the number '38'. The melody is a lively dance tune with many eighth and sixteenth notes.

Half Right & Left : & back again :  
 cast off hands 4 with the 3<sup>d</sup> Cu. :  
 Right & Left at top :

The Royal falute

39

Musical score for 'The Royal falute' in G major (two sharps) and common time. It consists of four staves of music. The first staff begins with a treble clef, a key signature of two sharps, and a common time signature. The music features a mix of eighth and sixteenth notes, with some beamed sixteenth notes. The piece concludes with a double bar line and repeat dots.

Lead down 2 Cu. & ballance Allemand  $\ddot{}$  up a -  
gain & ballance Allemand  $\ddot{}$  3. 1<sup>st</sup> Cu. ballance  
all round  $\ddot{}$  cast off Right & Left  $\ddot{}$

Justice Ballance

20

40

Musical score for 'Justice Ballance' in G major (two sharps) and common time. It consists of four staves of music. The first staff begins with a treble clef, a key signature of two sharps, and a common time signature. The music features a mix of eighth and sixteenth notes, with some beamed sixteenth notes. The piece concludes with a double bar line and repeat dots.

1<sup>st</sup> Cu. lead thro' the 2<sup>d</sup> Cu. & cast up  $\ddot{}$  2<sup>d</sup> Cu.  
lead thro' the 1<sup>st</sup> Cu. & cast off  $\ddot{}$  cros over  
& turn  $\ddot{}$  Right & Left  $\ddot{}$

The Laffes of Portsmouth

Maccarony Dance

41

Musical notation for 'The Laffes of Portsmouth' consisting of five staves. The first staff is marked with the number 41. The music is in a treble clef with a key signature of one flat (B-flat) and a common time signature (C). It features a series of eighth and sixteenth notes, with several trills indicated by the letter 'tr' above the notes. The piece concludes with a double bar line and repeat dots.

42

Musical notation for 'Maccarony Dance' consisting of five staves. The first staff is marked with the number 42. The music is in a treble clef with a key signature of one sharp (F#) and a 6/8 time signature. It features a series of eighth and sixteenth notes. The piece concludes with a double bar line and repeat dots.

Turn your Part: cast off & hands 4 with the 3<sup>d</sup> Cu. turn again cast up & hands 4 at top lead thro' the 3<sup>d</sup> Cu. & cast up lead thro' the top cast off & Right & Left

Allemand to the Right & cast off Allemand to the Left & cast up lead down 1 Cu. up again & cast off Right & Left

# The merry Hunters

43

48

43

48



43

48

43

48

The merry Hunters is a 2/4 time signature piece in B-flat major. It consists of four staves of music. The first staff starts with a treble clef, a key signature of one flat, and a 2/4 time signature. The music is written in a single melodic line. The piece ends with a double bar line and repeat dots.

The first Cu:lead thro the 3<sup>d</sup> Cu: call off lead up thro the 2<sup>d</sup> Cu:  foot it and back to back right Hands and left 

# The Queen's Night-Cap

22

44

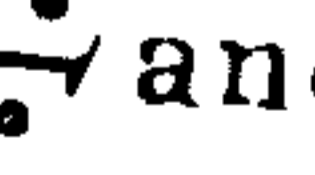
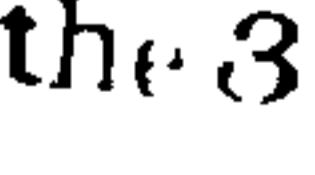
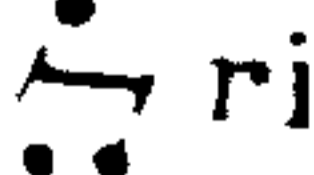

44

44

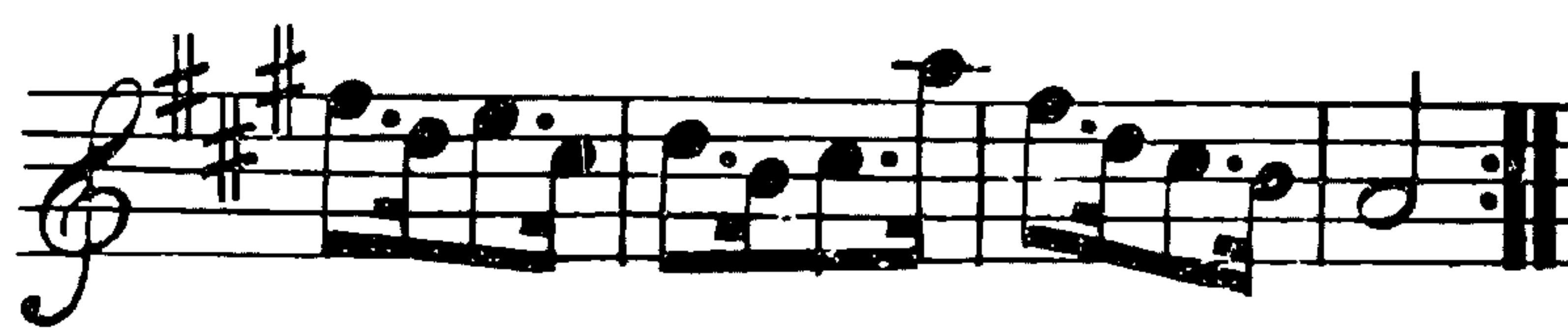
44

44

The Queen's Night-Cap is a 2/4 time signature piece in B-flat major. It consists of four staves of music. The first staff starts with a treble clef, a key signature of one flat, and a 2/4 time signature. The music is written in a single melodic line. The piece ends with a double bar line and repeat dots.

Hands all four a cross  and back again  Cross over one Cu:lead thro the 3<sup>d</sup> Cu:  right Hands and left 

The Boot



The first Man and Wo: sets to the 2<sup>d</sup> Man and all three turn hands  $\curvearrowright$  the same to the 2<sup>d</sup> Wo:  $\curvearrowright$  the first Cu: cross over and lead thro the 3<sup>d</sup> Cu: and cast up and right Hands and left  $\curvearrowright$   $\curvearrowright$

Polly Cleveland's Favourite



The first and 2<sup>d</sup> Cu: set and Change sides  $\curvearrowright$  set and lead to your own side  $\curvearrowright$  cross over foot it right Hands and left  $\curvearrowright$   $\curvearrowright$

Miss Molly's Wigg

May Day Morn



Hands a cross foot it  $\rightarrow$  hands a cross back again  
 and foot it  $\rightarrow$  cross over and half figure right  
 Hands and left  $\rightarrow$   $\rightarrow$

The first Man sets and turns the 2<sup>d</sup> Wo:  $\rightarrow$  the first Wo:  
 set and turns the 2<sup>d</sup> Man  $\rightarrow$  cross over on Cu: and lead  
 up cast back and turn  $\rightarrow$   $\rightarrow$  set and back to back  
 . foot it right hands and Left  $\rightarrow$   $\rightarrow$

**Source Citation:** "Twenty four country dances for the year 1774 : with proper tunes & directions to each dacne, as they are perform'd at court, Bath, & all publick assemblys." London, [1773?]. Eighteenth Century Collections Online. Gale. Newcastle University. 23 Sept. 2009  
<[http://find.galegroup.com/ecco/infomark.do?&contentSet=ECCOArticles&type=multipage&tabID=T001&prodId=ECCO&docId=CB3327663272&source=gale&userGroupName=new\\_itw&version=1.0&docLevel=FASCIMILE](http://find.galegroup.com/ecco/infomark.do?&contentSet=ECCOArticles&type=multipage&tabID=T001&prodId=ECCO&docId=CB3327663272&source=gale&userGroupName=new_itw&version=1.0&docLevel=FASCIMILE)>