

THOMPSON'S Compleat Collection of 200 FAVOURITE COUNTRY DANCES perform'd at
Court, Bath, Tunbridge & all Public Assemblies with proper Figures or Directions to each Tune

set for the Violin, German-Flute, & Hautboy. Pr. 3s. 6d.

VOLUME II.

transcribed & edited by
Fynn Titford-Mock, 2006-9

II. 1. The Tartar

Musical notation for 'The Tartar' in G major, 2/4 time. The first staff contains the main melody with two triplet markings. The second staff provides a harmonic accompaniment. Both staves end with a double bar line and repeat dots.

II. 2. The Stage Coach

Musical notation for 'The Stage Coach' in G major, 6/8 time. The first staff contains the main melody. The second staff provides a harmonic accompaniment. Both staves end with a double bar line and repeat dots.

II. 3. Come if you can

Musical notation for 'Come if you can' in G major, 2/4 time. The first staff contains the main melody with a repeat sign. The second staff provides a harmonic accompaniment. Both staves end with a double bar line and repeat dots.

II. 4. The Guittar

Musical notation for 'The Guittar' in G major, 6/8 time. The first staff contains the main melody. The second staff provides a harmonic accompaniment. Both staves end with a double bar line and repeat dots.

II. 5. The Booksellers Frolic

Musical notation for 'The Booksellers Frolic' in G major, 2/4 time. The first staff contains the main melody. The second staff provides a harmonic accompaniment with trill markings (tr) above several notes. Both staves end with a double bar line and repeat dots.

II. 6. Hessian Dance

Musical notation for 'Hessian Dance' in G major, 3/8 time. The first staff contains the main melody with trill markings (tr) above several notes. The second staff provides a harmonic accompaniment. Both staves end with a double bar line and repeat dots.

II. 7. The Mantua Makers Frolic

Musical score for 'The Mantua Makers Frolic' in 2/4 time, key of B-flat major. The score consists of two systems of two staves each. The first system includes a treble clef, a key signature of two flats, and a 2/4 time signature. The melody features several triplet markings (indicated by a '3' above the notes) and ends with a double bar line and repeat dots. The second system continues the melody with various rhythmic patterns and rests.

II. 8. Boyers Maggot

Musical score for 'Boyers Maggot' in common time (C), key of G major. The score consists of two systems of two staves each. The first system includes a treble clef, a key signature of one sharp, and a common time signature. The melody is characterized by eighth-note patterns and ends with a double bar line and repeat dots. The second system continues the melody with various rhythmic patterns and rests.

II. 9. Canterbury Revel

Musical score for 'Canterbury Revel' in 2/4 time, key of G major. The score consists of two systems of two staves each. The first system includes a treble clef, a key signature of one sharp, and a 2/4 time signature. The melody features eighth-note patterns and ends with a double bar line and repeat dots. The second system continues the melody with various rhythmic patterns and rests.

II. 10. The Comet

Musical score for 'The Comet' in 6/8 time, key of G major. The score consists of two systems of two staves each. The first system includes a treble clef, a key signature of one sharp, and a 6/8 time signature. The melody features eighth-note patterns and ends with a double bar line and repeat dots. The second system continues the melody with various rhythmic patterns and rests.

II. 11. Comical Corner

Musical score for 'Comical Corner' in 2/4 time, key of G major. The score consists of two systems of two staves each. The first system includes a treble clef, a key signature of one sharp, and a 2/4 time signature. The melody features eighth-note patterns and ends with a double bar line and repeat dots. The second system continues the melody with various rhythmic patterns and rests.

II. 12 The Maidens Choice

Musical score for 'The Maidens Choice' in 6/8 time, key of G major. The score consists of two systems of two staves each. The first system includes a treble clef, a key signature of one sharp, and a 6/8 time signature. The melody features eighth-note patterns and ends with a double bar line and repeat dots. The second system continues the melody with various rhythmic patterns and rests.

II. 13. Tattoo

Musical notation for II. 13. Tattoo, consisting of two staves. The key signature is two sharps (F# and C#) and the time signature is 2/4. The melody is written on the top staff and the accompaniment on the bottom staff. The piece ends with a double bar line and repeat dots.

II. 14. Take a dance

Musical notation for II. 14. Take a dance, consisting of two staves. The key signature is two sharps (F# and C#) and the time signature is 6/8. The melody is written on the top staff and the accompaniment on the bottom staff. Trills (tr) are indicated above certain notes in both staves. The piece ends with a double bar line and repeat dots.

II. 15. A Trip to Harrowgate

Musical notation for II. 15. A Trip to Harrowgate, consisting of two staves. The key signature is three sharps (F#, C#, and G#) and the time signature is 6/8. The melody is written on the top staff and the accompaniment on the bottom staff. The piece ends with a double bar line and repeat dots.

II. 16. The Beaver

Musical notation for II. 16. The Beaver, consisting of two staves. The key signature is three sharps (F#, C#, and G#) and the time signature is 6/8. The melody is written on the top staff and the accompaniment on the bottom staff. The piece ends with a double bar line and repeat dots.

II. 17. Lubbers Hole or Tower lane

Musical notation for II. 17. Lubbers Hole or Tower lane, consisting of two staves. The key signature is two flats (Bb and Eb) and the time signature is 2/4. The melody is written on the top staff and the accompaniment on the bottom staff. A triplet (3) is indicated above a group of notes in the top staff. The piece ends with a double bar line and repeat dots.

II. 18. Pitt's Fancy

Musical notation for II. 18. Pitt's Fancy, consisting of two staves. The key signature is two flats (Bb and Eb) and the time signature is 6/8. The melody is written on the top staff and the accompaniment on the bottom staff. The piece ends with a double bar line and repeat dots.

II. 19. In the Moor among the Heather

Musical notation for II. 19. In the Moor among the Heather, consisting of two staves. The key signature is one sharp (F#) and the time signature is common time (C). The melody is written on the top staff and the accompaniment on the bottom staff. The piece ends with a double bar line and repeat dots.

II. 20. The Prusian's Dance

Musical notation for 'The Prusian's Dance' in 6/8 time, key of D major. The piece consists of two staves. The first staff contains the main melody, and the second staff contains the accompaniment. The melody features a mix of eighth and sixteenth notes, with a repeat sign at the end.

II. 21. Jakie Stewarts Reel

Musical notation for 'Jakie Stewarts Reel' in 2/4 time, key of C major. The piece consists of two staves. The first staff contains the main melody, and the second staff contains the accompaniment. The melody is characterized by eighth-note patterns and a repeat sign at the end.

II. 22 Heywood Wake

Musical notation for 'Heywood Wake' in 6/8 time, key of D major. The piece consists of two staves. The first staff contains the main melody, and the second staff contains the accompaniment. The melody features a mix of eighth and sixteenth notes, with a repeat sign at the end.

II. 23. Jenny of the Green

Musical notation for 'Jenny of the Green' in 2/4 time, key of B-flat major. The piece consists of two staves. The first staff contains the main melody, and the second staff contains the accompaniment. The melody features eighth-note patterns and triplets, with a repeat sign at the end.

II. 24. Sally's Taste

Musical notation for 'Sally's Taste' in 2/4 time, key of D major. The piece consists of three staves. The first staff contains the main melody, and the second and third staves contain the accompaniment. The melody features eighth-note patterns and a repeat sign at the end.

II. 25. Brooks's Maggot

Musical notation for 'Brooks's Maggot' in 6/8 time, key of D major. The piece consists of two staves. The first staff contains the main melody, and the second staff contains the accompaniment. The melody features a mix of eighth and sixteenth notes, with a repeat sign at the end.

II. 26. The Comical Fancy

Musical notation for 'The Comical Fancy' in G major (one sharp) and 2/4 time. The piece consists of two systems of two staves each. The first system has a repeat sign at the end. The second system has a repeat sign at the end. The melody features eighth and sixteenth notes, with several triplet markings (indicated by a '3' over a group of notes).

II. 27. The Drunken Blacksmith

Musical notation for 'The Drunken Blacksmith' in G minor (two flats) and 6/8 time. The piece consists of two systems of two staves each. The first system has a repeat sign at the end. The second system has a repeat sign at the end. The melody features eighth and sixteenth notes, with a triplet marking in the first system.

II. 28. Bowyers Whim

Musical notation for 'Bowyers Whim' in G major (one sharp) and common time (C). The piece consists of three systems of two staves each. The first system has a repeat sign at the end. The second system has a repeat sign at the end. The third system has a repeat sign at the end. The melody features eighth and sixteenth notes, with several trill markings (indicated by 'tr' above notes).

II. 29. Stow Fair

Musical notation for 'Stow Fair' in G minor (two flats) and 2/4 time. The piece consists of three systems of two staves each. The first system has a repeat sign at the end. The second system has a repeat sign at the end. The third system has a repeat sign at the end. The melody features eighth and sixteenth notes.

II. 30. Commodore Howe's Ramble

Musical notation for 'Commodore Howe's Ramble' in G major (one sharp) and 6/8 time. The piece consists of two systems of two staves each. The first system has a repeat sign at the end. The second system has a repeat sign at the end. The melody features eighth and sixteenth notes, with a fermata over the final note of the first system. The second system ends with 'D.C.' (Da Capo).

II. 31. Muzzle Hill

Musical notation for 'Muzzle Hill' in G major (one sharp) and 2/4 time. The piece consists of three systems of two staves each. The first system has a repeat sign at the end. The second system has a repeat sign at the end. The third system has a repeat sign at the end. The melody features eighth and sixteenth notes, with several trill markings and triplet markings.

II. 32. One two three

Musical notation for 'One two three' in 2/4 time, key of D major. The piece consists of two staves. The first staff contains the melody, and the second staff contains the accompaniment. A trill (tr) is marked above the second measure of the second staff. The piece ends with a double bar line and repeat dots. The text 'Da Capo' is written below the second staff.

II. 33. Old Nicks Lumber Room or the Pawnbrokers Warehouse

Musical notation for 'Old Nicks Lumber Room or the Pawnbrokers Warehouse' in 6/8 time, key of D major. The piece consists of two staves. The first staff contains the melody, and the second staff contains the accompaniment. The piece ends with a double bar line and repeat dots.

II. 34. The Prusian Camp

Musical notation for 'The Prusian Camp' in 6/8 time, key of D major. The piece consists of two staves. The first staff contains the melody, and the second staff contains the accompaniment. The piece ends with a double bar line and repeat dots.

II. 35. Out and in upon occasion

Musical notation for 'Out and in upon occasion' in 6/8 time, key of D major. The piece consists of two staves. The first staff contains the melody, and the second staff contains the accompaniment. The piece ends with a double bar line and repeat dots.

II. 36. The Wheel of Life

Musical notation for 'The Wheel of Life' in 6/8 time, key of D major. The piece consists of three staves. The first staff contains the melody, and the second and third staves contain the accompaniment. A trill (tr) is marked above the eighth measure of the first staff. The piece ends with a double bar line and repeat dots.

II. 37. The Royal Midshipman

Musical notation for 'The Royal Midshipman' in 6/8 time, key of D major. The piece consists of two staves. The first staff contains the melody, and the second staff contains the accompaniment. The piece ends with a double bar line and repeat dots.

II. 38. Tom Prick's Favourite

Musical notation for 'Tom Prick's Favourite' in 2/4 time, key of D major. The piece consists of two staves. The first staff contains the melody, and the second staff contains the accompaniment. The piece ends with a double bar line and repeat dots.

II. 39. Chloe's Dream

Musical notation for "Chloe's Dream" in 2/4 time, key of D major. It consists of two staves. The first staff begins with a treble clef, a key signature of two sharps (F# and C#), and a 2/4 time signature. The melody is written in a simple, rhythmic style. The second staff continues the melody and includes a repeat sign at the beginning.

II. 40. The Happy Cobler

Musical notation for "The Happy Cobler" in 2/4 time, key of D major. It consists of two staves. The first staff begins with a treble clef, a key signature of two sharps (F# and C#), and a 2/4 time signature. The melody is written in a simple, rhythmic style. The second staff continues the melody and includes a repeat sign at the beginning.

II. 41. Jack Graces Front

Musical notation for "Jack Graces Front" in 6/8 time, key of D major. It consists of two staves. The first staff begins with a treble clef, a key signature of two sharps (F# and C#), and a 6/8 time signature. The melody is written in a simple, rhythmic style. The second staff continues the melody and includes a repeat sign at the beginning.

II. 42. Seymours Whim

Musical notation for "Seymours Whim" in 6/8 time, key of D major. It consists of two staves. The first staff begins with a treble clef, a key signature of two sharps (F# and C#), and a 6/8 time signature. The melody is written in a simple, rhythmic style. The second staff continues the melody and includes a repeat sign at the beginning.

II. 43. Britannia's Promise

Musical notation for "Britannia's Promise" in 2/4 time, key of D major. It consists of three staves. The first staff begins with a treble clef, a key signature of two sharps (F# and C#), and a 2/4 time signature. The melody is written in a simple, rhythmic style. The second and third staves continue the melody and include repeat signs at the beginning.

II. 44. All Hands Hoy

Musical notation for "All Hands Hoy" in 6/8 time, key of B minor. It consists of three staves. The first staff begins with a treble clef, a key signature of two flats (Bb and Eb), and a 6/8 time signature. The melody is written in a simple, rhythmic style. The second and third staves continue the melody and include repeat signs at the beginning. A trill (tr) is indicated above the first note of the third staff.

II. 45. The Quiver, or Cupids Prophecy

Two staves of music in G major and 2/4 time. The first staff contains two measures with triplets and a trill. The second staff contains two measures with a trill.

II. 46. Wednesday Night

Two staves of music in G major and 2/4 time. The first staff contains two measures. The second staff contains two measures.

II. 47. The Hour Glass

Two staves of music in G major and 6/8 time. The first staff contains two measures. The second staff contains two measures and is marked with 'D.C.' at the end.

II. 48. Under the Blankets

Two staves of music in G major and 6/8 time. The first staff contains two measures. The second staff contains two measures and is marked with '[D.C.]' at the end.

II. 49. Rylands Humour

Two staves of music in G major and common time. The first staff contains two measures. The second staff contains two measures.

II. 50. The Miller & Collier

Two staves of music in G major and 6/8 time. The first staff contains two measures with trills. The second staff contains two measures with trills.

II. 51. General Blakeney

Musical notation for II. 51. General Blakeney, consisting of two systems of two staves each. The first system is in 3/8 time with a key signature of one sharp (F#). The second system is in 2/4 time with a key signature of two sharps (F# and C#).

II. 52. Chasse D'Amour, or Lovers hunt

Musical notation for II. 52. Chasse D'Amour, or Lovers hunt, consisting of two systems of two staves each. The first system is in 2/4 time with a key signature of two sharps (F# and C#). The second system is in 2/4 time with a key signature of one sharp (F#). Trills (tr) are indicated above several notes.

II. 53. Lyon's Fancy

Musical notation for II. 53. Lyon's Fancy, consisting of two systems of two staves each. The first system is in 6/8 time with a key signature of three sharps (F#, C#, and G#). The second system is in 6/8 time with a key signature of three sharps (F#, C#, and G#).

II. 54. Dick Grimstead

Musical notation for II. 54. Dick Grimstead, consisting of two systems of two staves each. The first system is in 2/4 time with a key signature of one sharp (F#). The second system is in 2/4 time with a key signature of one sharp (F#). Trills (tr) are indicated above several notes.

II. 54. Kitty Fisher

Musical notation for II. 54. Kitty Fisher, consisting of two systems of two staves each. The first system is in 2/4 time with a key signature of one sharp (F#). The second system is in 2/4 time with a key signature of one sharp (F#).

II. 56. Easter Holy Days

Musical notation for II. 56. Easter Holy Days, consisting of two systems of two staves each. The first system is in common time (C) with a key signature of two sharps (F# and C#). The second system is in common time (C) with a key signature of two sharps (F# and C#).

II. 57. The midnight Ramble



II. 58. Capn. Commin's Ramble



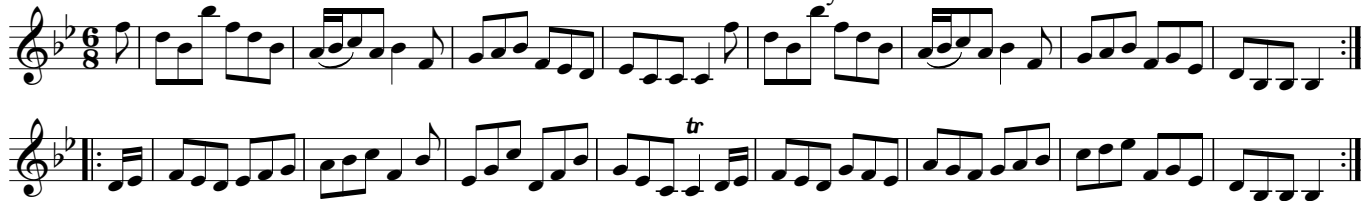
II. 59. The Royal Volunteers



II. 60. Gunersbury House



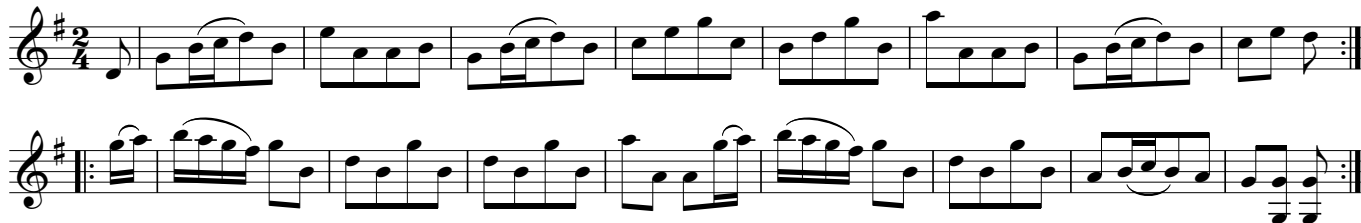
II. 61. The Assize Assembly



II. 62. Admiral Rodney's delight



II. 63. Turnham Green frolick



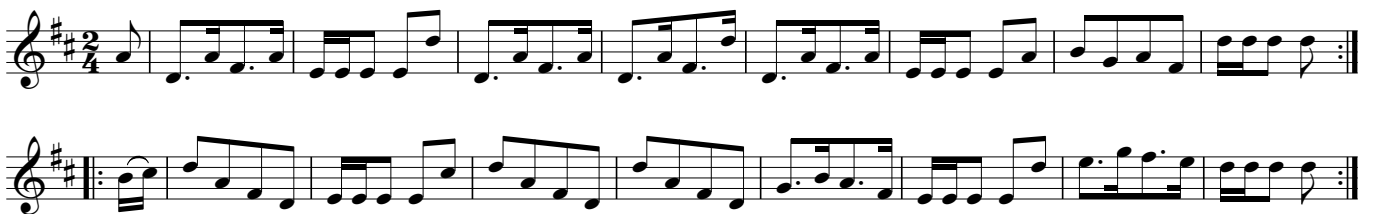
II. 70. The Militia Dance



II. 71. Will this please ye



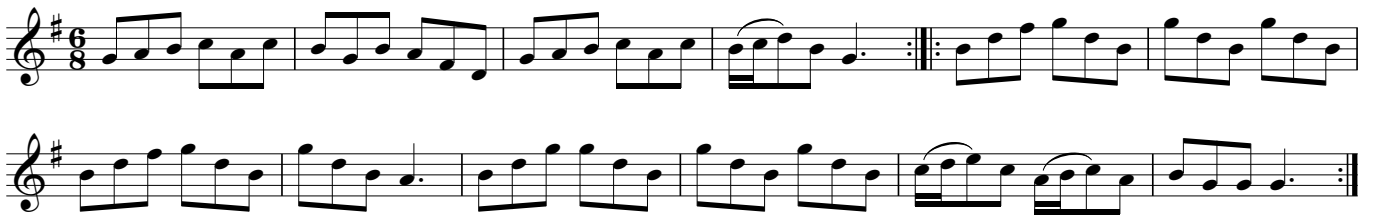
II. 72. The Invitation



II. 73. The Marquis of Granby's Rant



II. 74. The Prussian Soldier



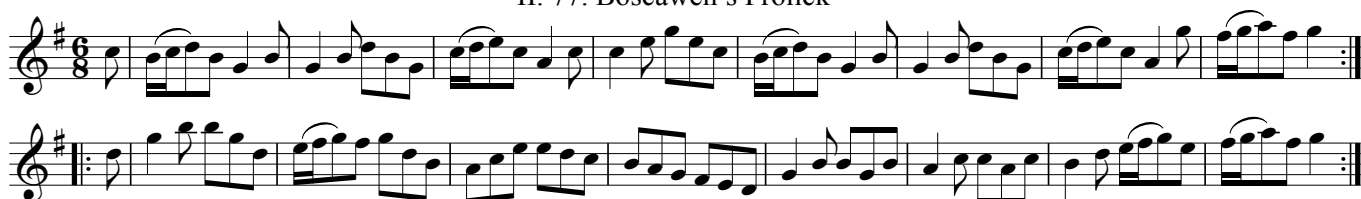
II. 75. Dance for ever



II. 76. The Red Rose



II. 77. Boscawen's Frolick



II. 78. A Trip to Germany



II. 79. The Threshers



II. 80. The way to keep him



II. 81. Mount Edgcomb



II. 82. Hum the Hummer



II. 83. Don Pedro

Two staves of music for 'Don Pedro'. The key signature is two sharps (F# and C#) and the time signature is 2/4. The melody features several trills (tr) and ends with a repeat sign.

II. 84. The Wanton Widow

Two staves of music for 'The Wanton Widow'. The key signature is two sharps (F# and C#) and the time signature is 2/4. The melody includes triplets (3) and ends with a repeat sign.

II. 85. Nanny's Delight

Two staves of music for 'Nanny's Delight'. The key signature is two sharps (F# and C#) and the time signature is 2/4. The melody includes first and second endings (1. and 2.) and a trill (tr). It ends with a repeat sign.

II. 86. The Happy Night

Two staves of music for 'The Happy Night'. The key signature is two sharps (F# and C#) and the time signature is 6/8. The melody features several triplets (3) and ends with a repeat sign.

II. 87. William's Delight

Four staves of music for 'William's Delight'. The key signature is two sharps (F# and C#) and the time signature is 2/4. The melody is written in a multi-measure rest format. It includes a 'D.C.' (Da Capo) instruction at the end.

II. 88. Skarden's Humour

One staff of music for 'Skarden's Humour'. The key signature is two sharps (F# and C#) and the time signature is 2/4. The melody is written in a multi-measure rest format and ends with a repeat sign.

II. 89. Lord Plymouth's Frolick

Musical notation for Lord Plymouth's Frolick, consisting of two staves in 2/4 time. The key signature has one sharp (F#). The melody is written on the top staff, and the accompaniment is on the bottom staff. The piece ends with a double bar line and repeat dots.

II. 90. General Elliots Delight

Musical notation for General Elliots Delight, consisting of two staves in 6/8 time. The key signature has three sharps (F#, C#, G#). The melody is on the top staff, and the accompaniment is on the bottom staff. The piece features a first ending (1.) and a second ending (2.) before concluding with a double bar line and repeat dots.

II. 91. The New Whim

Musical notation for The New Whim, consisting of two staves in 2/4 time. The key signature has two sharps (F#, C#). The melody is on the top staff, and the accompaniment is on the bottom staff. The piece ends with a double bar line and repeat dots.

II. 92. Dick the Welch Man

Musical notation for Dick the Welch Man, consisting of two staves in 2/4 time. The key signature has three sharps (F#, C#, G#). The melody is on the top staff, and the accompaniment is on the bottom staff. The piece includes a triplet in the melody and ends with a double bar line and repeat dots.

II. 93. A Trip to Plymouth

Musical notation for A Trip to Plymouth, consisting of two staves in 2/4 time. The key signature has two sharps (F#, C#). The melody is on the top staff, and the accompaniment is on the bottom staff. The piece ends with a double bar line and repeat dots.

II. 94. Governor Littleton's Delight

Musical notation for Governor Littleton's Delight, consisting of two staves in 2/4 time. The key signature has one sharp (F#). The melody is on the top staff, and the accompaniment is on the bottom staff. The piece includes a trill (tr) in the melody and ends with a double bar line and repeat dots.

II. 95. Honest Will

Musical notation for 'Honest Will' in G major, 2/4 time. The piece consists of two staves. The first staff begins with a treble clef, a key signature of two sharps (F# and C#), and a 2/4 time signature. The melody features a trill (tr) on the second measure and triplet markings (3) on the eighth and ninth measures. The second staff continues the melody with more triplet markings and ends with a repeat sign.

II. 96. The Jovial Dancers

Musical notation for 'The Jovial Dancers' in G major, 6/8 time. The piece consists of three staves. The first staff begins with a treble clef, a key signature of two sharps, and a 6/8 time signature. The melody is characterized by eighth-note patterns and includes a repeat sign. The second and third staves continue the melody with various rhythmic patterns and end with repeat signs.

II. 97. The Royal Charlotte

Musical notation for 'The Royal Charlotte' in G major, 6/8 time. The piece consists of two staves. The first staff begins with a treble clef, a key signature of two sharps, and a 6/8 time signature. The melody features eighth-note patterns and a repeat sign. The second staff continues the melody and ends with a repeat sign.

II. 98. Nancy Dawsons Fancy

Musical notation for 'Nancy Dawsons Fancy' in G major, common time (C). The piece consists of two staves. The first staff begins with a treble clef, a key signature of two sharps, and a common time signature. The melody includes a trill (tr) on the eighth measure. The second staff continues the melody with triplet markings (3) and a trill (tr) on the eighth measure, ending with a repeat sign.

II. 99. Tristram Shandy

Musical notation for 'Tristram Shandy' in G minor, 2/4 time. The piece consists of two staves. The first staff begins with a treble clef, a key signature of two flats (F and C), and a 2/4 time signature. The melody features eighth-note patterns and a repeat sign. The second staff continues the melody with a trill (tr) on the first measure and ends with a repeat sign.

II. 100. The Month of August

Musical notation for 'The Month of August' in G major, 2/4 time. The piece consists of two staves. The first staff begins with a treble clef, a key signature of two sharps, and a 2/4 time signature. The melody includes a trill (tr) on the fourth measure. The second staff continues the melody and ends with a repeat sign.

II. 101. Thomas and Sally

Musical score for 'Thomas and Sally' in C major, 2/4 time. The score consists of five staves. The first four staves are for a string quartet (Violin I, Violin II, Viola, and Violoncello), each featuring a trill (tr) on the first measure. The fifth staff is for the German Flute (Ger: Flute) and Viola (Vio:), with a trill on the first measure. The piece concludes with a double bar line and repeat dots.

II. 102. The old Maid

Musical score for 'The old Maid' in C major, 2/4 time. The score consists of three staves. The first staff is for Violin I, the second for Violin II, and the third for Viola and Violoncello. Each staff features a trill (tr) on the first measure. The piece concludes with a double bar line and repeat dots.

II. 103. Pritty Kitty

Musical score for 'Pritty Kitty' in C major, 2/4 time. The score consists of two staves. The first staff is for Violin I and the second for Violin II. The piece concludes with a double bar line and repeat dots.

II. 104. The Flirtation

Musical score for 'The Flirtation' in D major, 3/8 time. The score consists of two staves. The first staff is for Violin I and the second for Violin II. Both staves feature a trill (tr) on the first measure. The piece concludes with a double bar line and repeat dots.

II. 105. The Jolly Mortals

Musical notation for 'The Jolly Mortals' in 3/8 time, key of D major. The piece consists of two staves. The first staff begins with a treble clef, a key signature of two sharps (D major), and a 3/8 time signature. The melody features several trills (tr) and a repeat sign at the end. The second staff continues the melody with a repeat sign at the beginning.

II. 106. My Uncle Toby

Musical notation for 'My Uncle Toby' in 3/8 time, key of D major. The piece consists of two staves. The first staff begins with a treble clef, a key signature of two sharps (D major), and a 3/8 time signature. The melody features a repeat sign and a trill (tr) in the second measure. The second staff continues the melody with a repeat sign at the beginning.

II. 107. Lincolnshire Ladds

Musical notation for 'Lincolnshire Ladds' in 2/4 time, key of D major. The piece consists of two staves. The first staff begins with a treble clef, a key signature of two sharps (D major), and a 2/4 time signature. The melody features a trill (tr) and a repeat sign at the end. The second staff continues the melody with a repeat sign at the beginning.

II. 108. Lincolnshire Lasses

Musical notation for 'Lincolnshire Lasses' in common time, key of D major. The piece consists of two staves. The first staff begins with a treble clef, a key signature of two sharps (D major), and a common time signature. The melody features a repeat sign at the end. The second staff continues the melody with a repeat sign at the beginning.

II. 109. Bonny Kitty *

Musical notation for 'Bonny Kitty' in 2/4 time, key of D major. The piece consists of two staves. The first staff begins with a treble clef, a key signature of two sharps (D major), and a 2/4 time signature. The melody features a repeat sign at the end. The second staff continues the melody with a repeat sign at the beginning.

* see III.163. The Turtle

II. 110. The Coronation

Musical notation for 'The Coronation' in 6/8 time, key of D major. The piece consists of two staves. The first staff begins with a treble clef, a key signature of two sharps (D major), and a 6/8 time signature. The melody features trills (tr) and a repeat sign at the end. The second staff continues the melody with a repeat sign at the beginning.

II. 111. We'll Dance all Night

Musical notation for 'We'll Dance all Night' in 2/4 time, key of D major. The piece consists of two staves. The first staff begins with a treble clef, a key signature of two sharps (D major), and a 2/4 time signature. The melody features a trill (tr) and a repeat sign at the end. The second staff continues the melody with a repeat sign at the beginning.

II. 112. All in the Wrong

Musical notation for 'All in the Wrong' in 6/8 time, key of D major. The piece consists of two staves. The first staff contains the main melody, and the second staff contains a variation with a trill (tr) on the final note of the first phrase.

II. 113. A Trip from Slade

Musical notation for 'A Trip from Slade' in 6/8 time, key of B-flat major. The piece consists of three staves. The first staff contains the main melody, and the second and third staves contain variations of the melody.

II. 114. We'll all be Married

Musical notation for 'We'll all be Married' in common time, key of D major. The piece consists of three staves. The first staff contains the main melody, and the second and third staves contain variations of the melody.

II. 115. The Merry Weaver

Musical notation for 'The Merry Weaver' in 6/8 time, key of D major. The piece consists of two staves. The first staff contains the main melody, and the second staff contains a variation with a complex rhythmic accompaniment.

II. 116. The Lawyers Whim

Musical notation for 'The Lawyers Whim' in common time, key of B-flat major. The piece consists of three staves. The first staff contains the main melody, and the second and third staves contain variations of the melody.

II. 117. The Wedding Day

Musical notation for 'The Wedding Day' in 6/8 time, key of D major. The piece consists of two staves. The first staff contains the main melody with a trill (tr) in the final measure. The second staff is the accompaniment, also featuring trills (tr) in several measures.

II. 118. The Jolly Night

Musical notation for 'The Jolly Night' in 6/8 time, key of D major. The piece consists of two staves. The first staff contains the main melody with a trill (tr) in the fourth measure. The second staff is the accompaniment.

II. 119. Free Brittons

Musical notation for 'Free Brittons' in common time, key of D major. The piece consists of two staves. The first staff contains the main melody. The second staff is the accompaniment.

II. 120. The Duke of York

Musical notation for 'The Duke of York' in 6/8 time, key of D major. The piece consists of two staves. The first staff contains the main melody with trills (tr) in the first and fourth measures. The second staff is the accompaniment, also featuring a trill (tr) in the fourth measure.

II. 121. The White Horse

Musical notation for 'The White Horse' in 2/4 time, key of D major. The piece consists of three staves. The first staff contains the main melody. The second and third staves are the accompaniment, with the third staff featuring triplet markings (3) over the eighth notes in the first and fourth measures.

II. 122. Fanny the Fair

Musical notation for 'Fanny the Fair' in 6/8 time, key of D major. The piece consists of two staves. The first staff contains the main melody. The second staff is the accompaniment.

II. 123. The Prince of Wales

Musical notation for 'The Prince of Wales' in C major, 6/8 time. It consists of three staves of music. The first staff begins with a treble clef and a common time signature. The melody is composed of eighth and sixteenth notes. The second and third staves continue the melody, with repeat signs at the end of each line.

II. 124. The true Briton

Musical notation for 'The true Briton' in D major, 6/8 time. It consists of two staves of music. The first staff begins with a treble clef and a key signature of two sharps. Trills (tr) are indicated above several notes. The second staff continues the melody and ends with a repeat sign.

II. 125. Portsmouth Rout

Musical notation for 'Portsmouth Rout' in B-flat major, 6/8 time. It consists of three staves of music. The first staff begins with a treble clef and a key signature of two flats. Trills (tr) are indicated above several notes. The second and third staves continue the melody, with repeat signs at the end of each line.

II. 126. The two Legged Dropsy

Musical notation for 'The two Legged Dropsy' in D major, 2/4 time. It consists of two staves of music. The first staff begins with a treble clef and a key signature of two sharps. The melody is composed of quarter and eighth notes. The second staff continues the melody and ends with a repeat sign.

II. 127. The Prince of Mecklenburg's Jigg

Musical notation for 'The Prince of Mecklenburg's Jigg' in D major, 6/8 time. It consists of two staves of music. The first staff begins with a treble clef and a key signature of two sharps. The melody is composed of eighth and sixteenth notes. The second staff continues the melody and ends with a repeat sign.

II. 128. Granby's Jigg

Musical notation for 'Granby's Jigg' in B-flat major, 6/8 time. It consists of two staves of music. The first staff begins with a treble clef and a key signature of two flats. The melody is composed of eighth and sixteenth notes. The second staff continues the melody and ends with a repeat sign.

II. 129. Smiling Polly

Musical notation for "Smiling Polly" in 2/4 time, key of D major. The piece consists of two staves of music. The first staff begins with a treble clef, a key signature of two sharps (D major), and a 2/4 time signature. The melody is simple and rhythmic, ending with a double bar line and repeat dots. The second staff continues the melody, also ending with a double bar line and repeat dots.

II. 130. Cross the Water

Musical notation for "Cross the Water" in 6/8 time, key of D major. The piece consists of three staves of music. The first staff begins with a treble clef, a key signature of two sharps (D major), and a 6/8 time signature. It features a melody with a trill (tr) and a triplet (3). The second and third staves continue the melody, with the third staff also featuring a triplet. The piece ends with a double bar line and repeat dots.

II. 131. A trip to Guadaloup

Musical notation for "A trip to Guadaloup" in 6/8 time, key of B-flat major. The piece consists of three staves of music. The first staff begins with a treble clef, a key signature of two flats (B-flat major), and a 6/8 time signature. The melody is simple and rhythmic. The second and third staves continue the melody, ending with a double bar line and repeat dots.

II. 132. Preston Guild

Musical notation for "Preston Guild" in 6/8 time, key of D major. The piece consists of two staves of music. The first staff begins with a treble clef, a key signature of two sharps (D major), and a 6/8 time signature. The melody is simple and rhythmic. The second staff continues the melody, ending with a double bar line and repeat dots.

II. 133. A Trip to Martinico

Musical notation for "A Trip to Martinico" in 6/8 time, key of D major. The piece consists of three staves of music. The first staff begins with a treble clef, a key signature of two sharps (D major), and a 6/8 time signature. It features a melody with first and second endings (1. and 2.). The second and third staves continue the melody, also featuring first and second endings. The piece ends with a double bar line and repeat dots.

II. 134. The Mole Catcher

Musical score for 'The Mole Catcher' in 6/8 time, key of D major. The score consists of three staves. The first staff contains the melody with several triplet markings. The second and third staves provide harmonic accompaniment, also featuring triplet markings.

II. 135. The Misers Jewel

Musical score for 'The Misers Jewel' in 2/4 time, key of D major. The score consists of three staves. The first staff contains the melody. The second and third staves provide harmonic accompaniment, with the third staff featuring several triplet markings.

II. 136. The Harvest is in

Musical score for 'The Harvest is in' in 6/8 time, key of D major. The score consists of three staves. The first staff contains the melody. The second and third staves provide harmonic accompaniment.

II. 137. The Queen's House

Musical score for 'The Queen's House' in 2/4 time, key of D major. The score consists of two staves. The first staff contains the melody with some phrasing slurs. The second staff provides harmonic accompaniment with phrasing slurs.

II. 138. Strike the Colours

Musical score for 'Strike the Colours' in 3/4 time, key of D major. The score consists of three staves. The first staff contains the melody. The second and third staves provide harmonic accompaniment.

II. 139. Knocking and Scratching

Musical score for II. 139. Knocking and Scratching, featuring four staves of music in a key signature of two flats (B-flat and E-flat) and a common time signature (C). The melody is characterized by rhythmic patterns of eighth and sixteenth notes, with some triplet figures. The piece concludes with a double bar line and repeat dots.

II. 140. The Hermione

Musical score for II. 140. The Hermione, featuring two staves of music in a key signature of three sharps (F#, C#, G#) and a common time signature (C). The melody consists of eighth and sixteenth notes, ending with a double bar line and repeat dots.

II. 141. Two and Two

Musical score for II. 141. Two and Two, featuring two staves of music in a key signature of two flats (B-flat and E-flat) and a 6/8 time signature. The melody is composed of eighth and sixteenth notes, ending with a double bar line and repeat dots.

II. 142. The Job's done

Musical score for II. 142. The Job's done, featuring two staves of music in a key signature of three sharps (F#, C#, G#) and a 6/8 time signature. The melody is composed of eighth and sixteenth notes, ending with a double bar line and repeat dots.

II. 143. The Royal Cradle

Musical score for II. 143. The Royal Cradle, featuring three staves of music in a key signature of two flats (B-flat and E-flat) and a common time signature (C). The melody is composed of eighth and sixteenth notes, ending with a double bar line and repeat dots.

II. 144. The Queens Mule

Musical notation for 'The Queens Mule' in G major, 2/4 time. The piece consists of two staves. The first staff contains four measures of music, with the first measure starting on a treble clef and the second measure on a bass clef. The second staff contains four measures of music, with the first measure starting on a treble clef and the second measure on a bass clef. The music features a mix of eighth and sixteenth notes, with several triplet markings (indicated by a '3' above the notes) and repeat signs at the end of the piece.

II. 145. The Figure 3

Musical notation for 'The Figure 3' in G major, 2/4 time. The piece consists of three staves. The first staff contains four measures of music, with the first measure starting on a treble clef and the second measure on a bass clef. The second staff contains four measures of music, with the first measure starting on a treble clef and the second measure on a bass clef. The third staff contains four measures of music, with the first measure starting on a treble clef and the second measure on a bass clef. The music features a mix of eighth and sixteenth notes, with repeat signs at the end of the piece.

II. 146. The Delight of Sudbury

Musical notation for 'The Delight of Sudbury' in G major, 2/4 time. The piece consists of two staves. The first staff contains four measures of music, with the first measure starting on a treble clef and the second measure on a bass clef. The second staff contains four measures of music, with the first measure starting on a treble clef and the second measure on a bass clef. The music features a mix of eighth and sixteenth notes, with a trill marking (indicated by 'tr' above the note) in the second measure of the first staff and repeat signs at the end of the piece.

II. 147. Irish Lilt

Musical notation for 'Irish Lilt' in G major, 2/4 time. The piece consists of two staves. The first staff contains four measures of music, with the first measure starting on a treble clef and the second measure on a bass clef. The second staff contains four measures of music, with the first measure starting on a treble clef and the second measure on a bass clef. The music features a mix of eighth and sixteenth notes, with repeat signs at the end of the piece.

II. 148. Twenty fifth of May

Musical notation for 'Twenty fifth of May' in G major, 2/4 time. The piece consists of three staves. The first staff contains four measures of music, with the first measure starting on a treble clef and the second measure on a bass clef. The second staff contains four measures of music, with the first measure starting on a treble clef and the second measure on a bass clef. The third staff contains four measures of music, with the first measure starting on a treble clef and the second measure on a bass clef. The music features a mix of eighth and sixteenth notes, with repeat signs at the end of the piece.

II. 149. Punchanello

Musical notation for II. 149. Punchanello, featuring two staves of music in 2/4 time with a key signature of one sharp (F#).

II. 150. Love in a Village

Musical notation for II. 150. Love in a Village, featuring three staves of music in 2/4 time with a key signature of one sharp (F#). The notation includes a trill (tr) in the second staff.

II. 151. Nothing New

Musical notation for II. 151. Nothing New, featuring three staves of music in 2/4 time with a key signature of one sharp (F#). The notation includes several trills (tr).

II. 152. The Retreat

Musical notation for II. 152. The Retreat, featuring two staves of music in 6/8 time with a key signature of one sharp (F#).

II. 153. Trip to Lincoln

Musical notation for II. 153. Trip to Lincoln, featuring two staves of music in 6/8 time with a key signature of one sharp (F#).

II. 154. The Happy Pair

Musical notation for II. 154. The Happy Pair, featuring two staves of music in 6/8 time with a key signature of one sharp (F#).

II. 155. The Honey Pot

Musical notation for 'The Honey Pot' in 6/8 time, key of D major. The piece consists of two staves. The first staff contains the first two measures, followed by a repeat sign. The second staff contains the next two measures, followed by a repeat sign.

II. 156. Red Heath

Musical notation for 'Red Heath' in common time, key of D major. The piece consists of two staves. The first staff contains the first two measures, followed by a repeat sign. The second staff contains the next two measures, followed by a repeat sign. Trills (tr) are indicated above the notes in the first measure of each staff.

II. 157. The Dunstable Bonnet

Musical notation for 'The Dunstable Bonnet' in 6/8 time, key of D major. The piece consists of two staves. The first staff contains the first two measures, followed by a repeat sign. The second staff contains the next two measures, followed by a repeat sign. Trills (tr) are indicated above the notes in the first measure of each staff.

II. 158. The Month of March

Musical notation for 'The Month of March' in 2/4 time, key of D major. The piece consists of two staves. The first staff contains the first two measures, followed by a repeat sign. The second staff contains the next two measures, followed by a repeat sign. A trill (tr) is indicated above the note in the first measure of the first staff.

II. 159. Laugh and lay down

Musical notation for 'Laugh and lay down' in 2/4 time, key of D major. The piece consists of two staves. The first staff contains the first two measures, followed by a repeat sign. The second staff contains the next two measures, followed by a repeat sign. Trills (tr) are indicated above the notes in the first measure of each staff.

II. 160. A Trip to Richmond

Musical notation for 'A Trip to Richmond' in 2/4 time, key of D major. The piece consists of three staves. The first staff contains the first two measures, followed by a repeat sign. The second staff contains the next two measures, followed by a repeat sign. The third staff contains the final two measures, followed by a repeat sign. A trill (tr) is indicated above the note in the first measure of the third staff.

II. 161. The Review or Bellisle March

Musical notation for II. 161. The Review or Bellisle March, featuring two staves of music in C major and common time. The first staff contains the main melody with a trill (tr) and a triplet (3) in the first measure. The second staff provides a bass line accompaniment, also featuring a trill and a triplet.

II. 162. Monday Night

Musical notation for II. 162. Monday Night, featuring two staves of music in D major and 2/4 time. The first staff contains the main melody, and the second staff provides a bass line accompaniment.

II. 163. Cap: Reeds Delight

Musical notation for II. 163. Cap: Reeds Delight, featuring three staves of music in D major and common time. The first staff contains the main melody with a triplet (3). The second and third staves provide bass line accompaniment, with the second staff including a trill (tr).

II. 164. The Mayor of Garratt

Musical notation for II. 164. The Mayor of Garratt, featuring two staves of music in D major and 2/4 time. The first staff contains the main melody, and the second staff provides a bass line accompaniment.

II. 165. The Rioters

Musical notation for II. 165. The Rioters, featuring three staves of music in C major and common time. The first staff contains the main melody. The second and third staves provide bass line accompaniment, with the second staff including a trill (tr).

II. 166. The young Prince

Musical notation for II. 166. The young Prince, featuring two staves of music in D major and 6/8 time. The first staff contains the main melody, and the second staff provides a bass line accompaniment.

II. 167. The Busy Body

Musical notation for 'The Busy Body' in 6/8 time, featuring two staves of music with a key signature of one flat (Bb).

II. 168. The Merry Pair

Musical notation for 'The Merry Pair' in 6/8 time, featuring two staves of music with a key signature of two sharps (F# and C#). Trills (tr) are indicated above several notes.

II. 169. Edinburgh Frolick

Musical notation for 'Edinburgh Frolick' in 2/4 time, featuring two staves of music with a key signature of one flat (Bb). Trills (tr) are indicated above several notes.

II. 170. Hey for Honesty, or Neighbour downright

Musical notation for 'Hey for Honesty, or Neighbour downright' in 6/8 time, featuring two staves of music with a key signature of one sharp (F#). Trills (tr) are indicated above several notes.

II. 171. Drops of Brandy

Musical notation for 'Drops of Brandy' in 9/8 time, featuring two staves of music with a key signature of one sharp (F#).

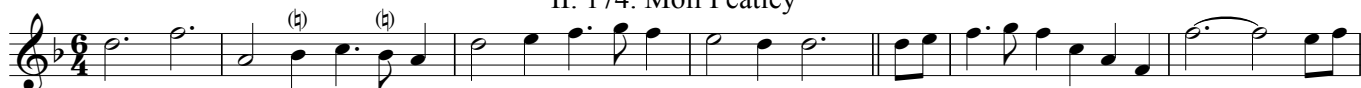
II. 172. Young Roger

Musical notation for 'Young Roger' in 9/4 time, featuring two staves of music with a key signature of two sharps (F# and C#). A trill (tr) is indicated above a note in the second staff.

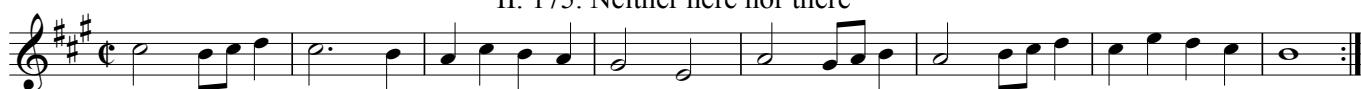
II. 173. Butterd Pease



II. 174. Moll Peatley



II. 175. Neither here nor there



II. 176. The Ladds of Dunce



II. 177. Miss Johnsons March



II. 178. Moll Spicers Reel



II. 179. Jonny cock thy Beaver

Musical notation for II. 179. Jonny cock thy Beaver, consisting of three staves of music in 6/4 time. The first staff begins with a treble clef and a key signature of one flat (Bb). The melody is written in a simple, folk style with various note values including quarter, eighth, and sixteenth notes, and rests.

II. 180. The Baulk

Musical notation for II. 180. The Baulk, consisting of two staves of music in 6/8 time. The first staff begins with a treble clef and a key signature of two flats (Bb, Eb). The melody features a mix of eighth and quarter notes, with some triplet-like patterns.

II. 181. Nomans Jigg

Musical notation for II. 181. Nomans Jigg, consisting of two staves of music in 6/8 time. The first staff begins with a treble clef and a key signature of one sharp (F#). The melody is characterized by frequent eighth-note patterns and a lively, rhythmic feel.

II. 182. Joans Placket

Musical notation for II. 182. Joans Placket, consisting of two staves of music in 6/4 time. The first staff begins with a treble clef and a key signature of one sharp (F#). The melody is composed of quarter and eighth notes, with a steady, rhythmic progression.

II. 183. Black Joke

Musical notation for II. 183. Black Joke, consisting of three staves of music in 6/4 time. The first staff begins with a treble clef and a key signature of one sharp (F#). The melody is written in a simple, folk style with various note values and rests.

II. 184. Mad Moll

Musical notation for II. 184. Mad Moll, consisting of two staves of music in 2/4 time. The first staff begins with a treble clef and a key signature of one sharp (F#). The melody is characterized by frequent eighth-note patterns and a lively, rhythmic feel.

II. 185.* Dainty Davy

Musical notation for Dainty Davy, consisting of two staves. The first staff is in treble clef with a common time signature (C). The second staff is in treble clef with a common time signature (C). The piece ends with a double bar line and repeat dots.

* mis-numbered 183

II. 186.* Hey to the Camp

Musical notation for Hey to the Camp, consisting of three staves. The first staff is in treble clef with a 6/8 time signature. The second and third staves are in treble clef with a 6/8 time signature. The piece ends with a double bar line and repeat dots.

* mis-numbered 184

II. 187. America

Musical notation for America, consisting of two staves. The first staff is in treble clef with a common time signature (C). The second staff is in treble clef with a common time signature (C). The piece ends with a double bar line and repeat dots.

Minuet

Musical notation for Minuet, consisting of two staves. The first staff is in treble clef with a 3/4 time signature. The second staff is in treble clef with a 3/4 time signature. The piece ends with a double bar line and repeat dots.

D.C

end with the first strain of the Minuet

II.188. Cheshire Rounds

Musical notation for Cheshire Rounds, consisting of two staves. The first staff is in treble clef with a 3/2 time signature and a key signature of one sharp (F#). The second staff is in treble clef with a 3/2 time signature and a key signature of one sharp (F#). The piece ends with a double bar line and repeat dots.

II.189. The De'els Dead

Musical notation for The De'els Dead, consisting of two staves. The first staff is in treble clef with a 2/4 time signature and a key signature of one flat (Bb). The second staff is in treble clef with a 2/4 time signature and a key signature of one flat (Bb). The piece ends with a double bar line and repeat dots.

II.190. Dusty Miller

Musical notation for 'Dusty Miller' in 3/4 time, key of D major. The first staff shows the main melody with a repeat sign. The second staff shows a variation with a trill (tr) on the final note.

II.191. The Drouth

Musical notation for 'The Drouth' in 9/8 time, key of B-flat major. The first staff shows the main melody with a repeat sign. The second staff shows a variation with a trill (tr) on the final note.

II.192. Roger of Coverly

Musical notation for 'Roger of Coverly' in 2/4 time, key of D major. The first staff shows the main melody with a repeat sign. The second staff shows a variation with a trill (tr) on the final note.

II.193. Windsor Forest

Musical notation for 'Windsor Forest' in common time, key of B-flat major. The first staff shows the main melody with a repeat sign. The second and third staves show variations with trills (tr) on the final notes.

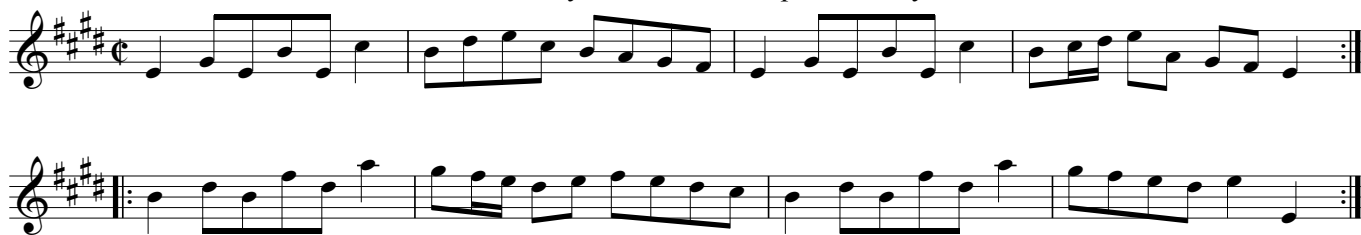
II.194. Honest Temple's Jigg

Musical notation for 'Honest Temple's Jigg' in 6/8 time, key of D major. The first staff shows the main melody with a trill (tr) on the final note. The second staff shows a variation with a trill (tr) on the final note.

II.195. A Trip to Quebec

Musical notation for 'A Trip to Quebec' in 6/8 time, key of D major. The first staff shows the main melody with a trill (tr) on the final note. The second and third staves show variations with trills (tr) on the final notes.

II.196. Lady Caroline Stanhopes birthday



II.197.* Prince Henry's Jigg



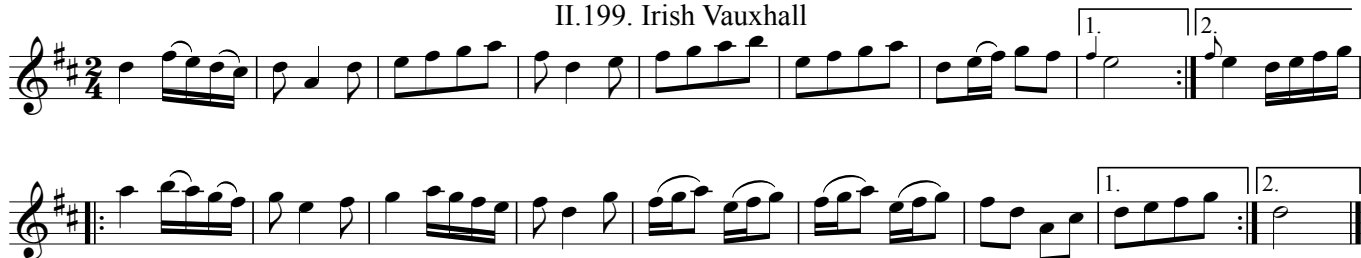
* mis-numbered 195

II.198.* Charming Kitty



* mis-numbered 196

II.199. Irish Vauxhall



II. 200. Tom Jones

