

A Select Collection of Airs, Jigs, Marches and Reels

Publisher: N. Stewart

A
Select Collection
of
SCOTS ENGLISH IRISH
And
Foreign Airs Jiggs & Marches
With some of the Newst & most Fashionable REELS &c.
_____ Adapted for the _____
GERMAN FLUTE VIOLIN & FIFE
Vol 1.

EDINBURGH Printed & Sold by N. STEWART at his Musical Circulating Library Parliament Square

Transcription notes: Each tune is in a file with a name of the form NNN_Title.abc, where NNN is the 2–digit page number, Title is the tune’s title with underscores for spaces, K is the key, B is the number of bars in one playing of the tune, and S is the number of staves in the transcription.

The staves have sometimes been reformatted to fit A4/US–letter pages, usually with a multiple of 4 bars per staff to go with a relatively small scale for proofreading. You should reformat the staves to match your needs.

A few tunes use voice overlays (2 voices on one staff) that much ABC software can’t handle. Two versions of these are provided: a NNN–Title–V1.abc file that’s arranged to work with such software, and a NNN=Title–V2.abc file that contains the voice overlays. This is also used for the cases of "chord" appoggiaturas and some other features that aren’t widely implemented yet. The ‘-’ vs ‘=’ after the page number is to make it easier for makefiles to tell them apart.

King of Prussia’s Hornpipe

Musical notation for "King of Prussia’s Hornpipe". The piece is in G major (one sharp) and 2/4 time. It consists of two staves. The first staff begins with a repeat sign and contains the main melody. The second staff provides a bass line, featuring a trill (tr) on the second measure.

Le Fontainbleau

Musical notation for "Le Fontainbleau". The piece is in G major (one sharp) and 6/8 time. It consists of four staves. The first staff contains the main melody. The second and third staves provide a bass line. The fourth staff contains dynamics, with a piano (p) marking on the first measure and a forte (f) marking on the fifth measure.

Love in a Village

Two staves of musical notation for the piece 'Love in a Village'. The music is written in treble clef with a key signature of one sharp (F#) and a common time signature (C). The melody is characterized by eighth and sixteenth notes, with some triplet patterns. The piece concludes with a double bar line and repeat dots.

Lillie Bulairie

Two staves of musical notation for the piece 'Lillie Bulairie'. The music is written in treble clef with a key signature of one sharp (F#) and a 6/8 time signature. The melody features a mix of eighth and sixteenth notes, with a trill (tr) marking above the first measure. The piece ends with a double bar line and repeat dots.

Polystons Hornpipe

Four staves of musical notation for the piece 'Polystons Hornpipe'. The music is written in treble clef with a key signature of one sharp (F#) and a 3/2 time signature. The melody is primarily composed of quarter and eighth notes, with several trill (tr) markings. The piece concludes with a double bar line and repeat dots.

Harlequin Tune

Two staves of musical notation for the piece 'Harlequin Tune'. The music is written in treble clef with a key signature of one sharp (F#) and a 6/8 time signature. The melody consists of eighth and sixteenth notes, with a trill (tr) marking above the final measure. The piece ends with a double bar line and repeat dots.

Air Harlequin Ranger

Two staves of musical notation for the piece 'Air Harlequin Ranger'. The music is written in treble clef with a key signature of one sharp (F#) and a 6/8 time signature. The melody features eighth and sixteenth notes, with trill (tr) markings above several measures. The piece concludes with a double bar line and repeat dots.

La Rosetta

Musical score for "La Rosetta" in 6/8 time, key of D major. The score consists of five staves. The first staff is the melody. The second and third staves are accompaniment. The fourth and fifth staves are a second part of the accompaniment. The piece ends with a double bar line and repeat dots.

Earl Cornwallise's March

Musical score for "Earl Cornwallise's March" in 2/4 time, key of D major. The score consists of three staves. The first staff is the melody, featuring a trill (tr) at the end. The second and third staves are accompaniment. The piece ends with a double bar line and repeat dots.

Scots Measure

Musical score for "Scots Measure" in 2/4 time, key of D major. The score consists of two staves. The first staff is the melody, featuring a trill (tr). The second staff is the accompaniment. The piece ends with a double bar line and repeat dots.

Colonel Tarleton's Quick March

Musical score for "Colonel Tarleton's Quick March" in 6/8 time, key of D major. The score consists of three staves. The first staff is the melody. The second and third staves are accompaniment. The piece ends with a double bar line and repeat dots.

Air in Queen Mab

Musical score for 'Air in Queen Mab' in 6/8 time, key of D major. The score consists of three staves. The first staff begins with a repeat sign. The second staff contains trills (tr) in the second measure. The piece concludes with a repeat sign.

Colonel Webster's March

Musical score for 'Colonel Webster's March' in common time, key of D major. The score consists of three staves. The second staff contains trills (tr) in the first measure. The piece concludes with a repeat sign.

The Tempest

Musical score for 'The Tempest' in 2/4 time, key of D major. The score consists of two staves. The piece concludes with a repeat sign.

The Edin.r Defensive Band's March

Musical score for 'The Edin.r Defensive Band's March' in common time, key of D major. The score consists of three staves. The second staff contains trills (tr) in the first measure. The third staff contains fortissimo (f) markings in the first, second, and third measures. The piece concludes with a repeat sign.

Quick Step

Musical score for 'Quick Step' in 6/8 time, key of D major. The score consists of two staves. The second staff contains trills (tr) in the first and second measures. The piece concludes with a repeat sign.

Miss Chalmer's Gigg

Two staves of music in 6/8 time, key of D major. The melody is simple and repetitive, consisting of eighth and quarter notes. The first staff begins with a repeat sign and a double bar line. The second staff ends with a repeat sign and a double bar line.

Miss Dundas's Gigg

Two staves of music in 6/8 time, key of D major. The melody is more complex than the previous piece, featuring trills (tr) and sixteenth notes. The first staff begins with a repeat sign and a double bar line. The second staff ends with a repeat sign and a double bar line.

Paddie's Resource

Two staves of music in 6/8 time, key of D major. The melody is lively and features many sixteenth notes and trills (tr). The first staff begins with a repeat sign and a double bar line. The second staff ends with a repeat sign and a double bar line.

Gavot by Mr Maclean

Two staves of music in 6/8 time, key of D major. The melody is simple and features many quarter notes and half notes. The first staff begins with a repeat sign and a double bar line. The second staff ends with a repeat sign and a double bar line.

Italian Peasants

Two staves of music in 6/8 time, key of D major. The melody is lively and features many sixteenth notes and trills (tr). The first staff begins with a repeat sign and a double bar line. The second staff ends with a repeat sign and a double bar line.

Hornpipe by Mr Festing

Musical score for Hornpipe by Mr Festing, consisting of four staves of music in 3/2 time with a key signature of one sharp (F#).

Trip to Gunning Hill Wells

Musical score for Trip to Gunning Hill Wells, consisting of one staff of music in 6/8 time with a key signature of one sharp (F#).

March of the 17 Reg.t

Musical score for March of the 17 Reg.t, consisting of four staves of music in 2/4 time with a key signature of one sharp (F#). A triplet of eighth notes is marked with a '3' in the third staff.

Rigadoon

Musical score for Rigadoon, consisting of two staves of music in common time (C) with a key signature of one sharp (F#). Trills are indicated with 'tr' above notes in both staves.

Hornpipe

Musical score for Hornpipe, consisting of two staves of music in 3/2 time with a key signature of one sharp (F#). Trills are indicated with 'tr' above notes in both staves.

Lady Townsend's Fette de Camp

Two staves of musical notation in 2/4 time, key of D major. The first staff begins with a repeat sign and contains a series of eighth and sixteenth notes. The second staff continues the melody with similar rhythmic patterns.

La Scimballe

Two staves of musical notation in 6/8 time, key of D major. The first staff features a melody with eighth notes and rests. The second staff includes a trill (tr) on the first measure and continues with eighth notes.

Las Chasse de la Garde

Four staves of musical notation in 6/8 time, key of D major. The first staff starts with a repeat sign and a fermata. The second staff has a 'Fine' marking. The third and fourth staves include 'D.C.' (Da Capo) markings and repeat signs.

The Tast

Three staves of musical notation in 6/8 time, key of D major. The first two staves feature a complex, fast-paced melody with many sixteenth notes. The third staff continues the piece with similar rhythmic intensity.

La Rose

Three staves of musical notation in 2/4 time, key of D major. The first staff begins with a repeat sign and contains a melody of eighth notes. The second and third staves continue the piece with similar rhythmic patterns.

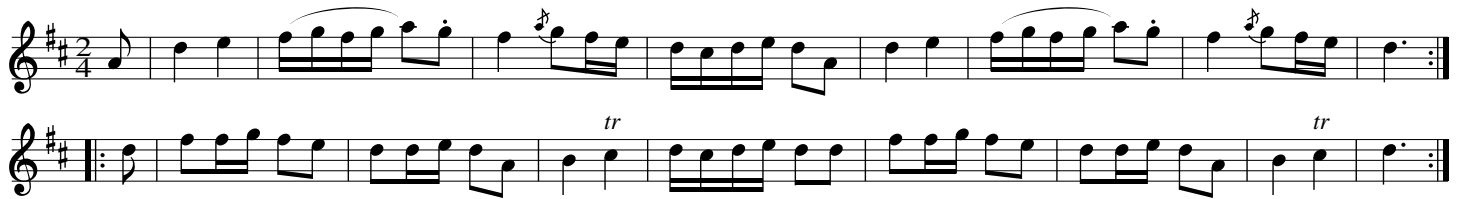
The Flying Fish



West's Hornpipe



La' Foes Allemande



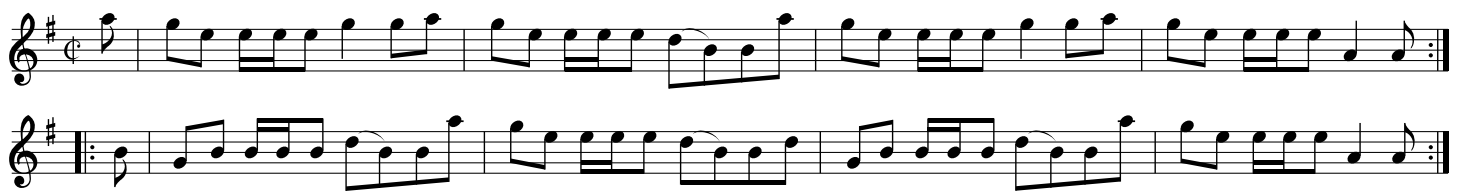
Rigadoon by Philpot



Gigg by Mr Arne



Callam Phiter



Les Bois



Mr Aldrige's Highland Laddie

Two staves of musical notation for 'Mr Aldrige's Highland Laddie'. The key signature is one sharp (F#) and the time signature is common time (C). The melody is written in a single line on a treble clef staff. The first staff begins with a repeat sign and a first ending bracket. The second staff continues the melody and also ends with a repeat sign and a first ending bracket.

La Ruggieni

Five staves of musical notation for 'La Ruggieni'. The key signature is one sharp (F#) and the time signature is 2/4. The notation is arranged in two systems of two staves each, with a fifth single staff at the bottom. The music features a variety of rhythmic patterns, including eighth and sixteenth notes, and rests. There are several repeat signs and first ending brackets throughout the piece.

Air by Mr Handel

Two staves of musical notation for 'Air by Mr Handel'. The key signature is one sharp (F#) and the time signature is common time (C). The melody is written in a single line on a treble clef staff. The first staff includes trill ornaments (tr) over certain notes. The second staff continues the melody and ends with a trill ornament and a repeat sign.

Goud a Goupens

Three staves of musical notation for 'Goud a Goupens'. The key signature is one sharp (F#) and the time signature is 6/8. The notation is arranged in three staves. The music features a variety of rhythmic patterns, including eighth and sixteenth notes, and rests. There are several trill ornaments (tr) and repeat signs throughout the piece.

The King's March

Musical score for 'The King's March' in G major, 2/4 time. The score consists of three staves. The first staff begins with a treble clef, a key signature of one sharp (F#), and a 2/4 time signature. The melody is characterized by eighth and sixteenth notes, with several trills (tr) and slurs. The second and third staves continue the melody, also featuring trills and slurs. The piece concludes with a double bar line and repeat dots.

La Provencale

Musical score for 'La Provencale' in G major, common time (C). The score consists of two staves. The first staff begins with a treble clef, a key signature of one sharp (F#), and a common time signature. The melody is primarily composed of quarter and eighth notes. The second staff continues the melody, including a trill (tr) and ending with a double bar line and repeat dots.

Kelso Lasses

Musical score for 'Kelso Lasses' in G major, 9/8 time. The score consists of two staves. The first staff begins with a treble clef, a key signature of one sharp (F#), and a 9/8 time signature. The melody features a mix of eighth and quarter notes, with a trill (tr) in the second measure. The second staff continues the melody, also featuring a trill (tr) and ending with a double bar line and repeat dots.

Air in Harlequin Ranger

Musical score for 'Air in Harlequin Ranger' in G major, common time (C). The score consists of two staves. The first staff begins with a treble clef, a key signature of one sharp (F#), and a common time signature. The melody is highly rhythmic, featuring many sixteenth notes and slurs. The second staff continues the melody, including several trills (tr) and ending with a double bar line and repeat dots.

Gigg

Musical score for 'Gigg' in G major, 9/8 time. The score consists of two staves. The first staff begins with a treble clef, a key signature of one sharp (F#), and a 9/8 time signature. The melody is composed of eighth and quarter notes, with a trill (tr) in the second measure. The second staff continues the melody, also featuring a trill (tr) and ending with a double bar line and repeat dots.

La Mignonette Francoise

Musical score for 'La Mignonette Francoise' in G major and 6/8 time. The score consists of four staves. The first staff is the melody, featuring a trill (tr) on the second measure. The second and third staves are the accompaniment, with the third staff also containing a trill. The fourth staff is a bass line with trills on the second and third measures. The piece concludes with a double bar line and repeat dots.

Air in Fortunatus

Musical score for 'Air in Fortunatus' in G major and 6/8 time. The score consists of two staves. The first staff is the melody, featuring trills (tr) on the second and sixth measures. The second staff is the accompaniment. The piece concludes with a double bar line and repeat dots.

Vauntine

Musical score for 'Vauntine' in G major and 2/4 time. The score consists of three staves. The first staff is the melody, featuring a repeat sign. The second and third staves are the accompaniment, with the third staff featuring a trill (tr) on the fifth measure. The piece concludes with a double bar line and repeat dots.

The London Camp

Musical score for 'The London Camp' in G major and 6/8 time. The score consists of two staves. The first staff is the melody, featuring a repeat sign. The second staff is the accompaniment. The piece concludes with a double bar line and repeat dots.

Le Doux Portraite

Musical score for 'Le Doux Portraite' in G major and 2/4 time. The score consists of two staves. The first staff is the melody, featuring a trill (tr) on the eighth measure. The second staff is the accompaniment, also featuring a trill (tr) on the first measure. The piece concludes with a double bar line and repeat dots.

Whip her and Gird her

Musical score for 'Whip her and Gird her' in 6/8 time, key of D major. The score consists of four staves. The first staff begins with a repeat sign and a trill (tr) over the second measure. The music features a mix of eighth and sixteenth notes with various rests and phrasing.

Le Moulin de Sanois

Musical score for 'Le Moulin de Sanois' in 2/4 time, key of D major. The score consists of four staves. The first staff begins with a repeat sign. The music is characterized by eighth and sixteenth note patterns. A 'Fine.' marking is present in the third staff, indicating the end of the piece.

The Raged Sailor

Musical score for 'The Raged Sailor' in 6/8 time, key of D major. The score consists of two staves. The first staff begins with a repeat sign and ends with a trill (tr) over the final note. The second staff also ends with a trill (tr) over the final note.

La Reni

Musical score for 'La Reni' in 2/4 time, key of D major. The score consists of three staves. The first staff begins with a repeat sign. The music features a mix of eighth and sixteenth notes with various rests and phrasing.

We're a forsaken for want o' Siller

Musical notation for the first piece, consisting of two staves. The key signature has one sharp (F#) and the time signature is 6/8. The melody features several trills (tr) and is repeated twice.

O'er the Muir to Kettie

Musical notation for the second piece, consisting of two staves. The key signature has two sharps (F# and C#) and the time signature is 4/4. The melody is repeated twice.

Kick the Rogue's out

Musical notation for the third piece, consisting of two staves. The key signature has two sharps (F# and C#) and the time signature is 9/8. The melody features several trills (tr) and is repeated twice.

Love and Honour

Musical notation for the fourth piece, consisting of two staves. The key signature has two sharps (F# and C#) and the time signature is 6/8. The melody is repeated twice.

The Pantheon

Musical notation for the fifth piece, consisting of four staves. The key signature has one sharp (F#) and the time signature is 6/8. The melody is repeated twice.

A Trip up Stairs

Musical notation for 'A Trip up Stairs' in 6/8 time, key of D major. The piece consists of two staves. The first staff begins with a treble clef and a key signature of one sharp (F#). The second staff begins with a bass clef and a key signature of one sharp (F#). The music features a mix of eighth and sixteenth notes, with some triplet-like patterns.

The Souters of Selkirk

Musical notation for 'The Souters of Selkirk' in 6/8 time, key of D major. The piece consists of two staves. The first staff begins with a treble clef and a key signature of one sharp (F#). The second staff begins with a bass clef and a key signature of one sharp (F#). The music features a mix of eighth and sixteenth notes, with some triplet-like patterns. Trills (tr) are indicated above certain notes in both staves.

Cotillon

Musical notation for 'Cotillon' in 6/8 time, key of D major. The piece consists of two staves. The first staff begins with a treble clef and a key signature of one sharp (F#). The second staff begins with a bass clef and a key signature of one sharp (F#). The music features a mix of eighth and sixteenth notes, with some triplet-like patterns. A trill (tr) is indicated above a note in the first staff.

La Hier Au Soir

Musical notation for 'La Hier Au Soir' in 6/8 time, key of D major. The piece consists of two staves. The first staff begins with a treble clef and a key signature of one sharp (F#). The second staff begins with a bass clef and a key signature of one sharp (F#). The music features a mix of eighth and sixteenth notes, with some triplet-like patterns. Trills (tr) are indicated above several notes in both staves.

Cotillon

Musical notation for 'Cotillon' in 6/8 time, key of D major. The piece consists of four staves. The first staff begins with a treble clef and a key signature of one sharp (F#). The second staff begins with a bass clef and a key signature of one sharp (F#). The third and fourth staves begin with a treble clef and a key signature of one sharp (F#). The music features a mix of eighth and sixteenth notes, with some triplet-like patterns. A trill (tr) is indicated above a note in the first staff.

Cotillon

Musical score for Cotillon, measures 1-12. The piece is in 6/8 time and G major. It consists of four staves of music. The first staff begins with a treble clef, a key signature of one sharp (F#), and a 6/8 time signature. The music features a mix of eighth and sixteenth notes, with some beamed sixteenth notes. The first staff ends with a double bar line and the word "fine". The second, third, and fourth staves continue the melody and accompaniment, each ending with a double bar line and an asterisk symbol.

Cotillon

Musical score for Cotillon, measures 13-24. The piece continues in 6/8 time and G major. It consists of four staves of music. The first staff begins with a treble clef, a key signature of one sharp (F#), and a 6/8 time signature. The music continues with similar rhythmic patterns. The first staff ends with a double bar line and the word "fine". The second, third, and fourth staves continue the melody and accompaniment, each ending with a double bar line and an asterisk symbol.

La Pendress

Musical score for La Pendress, measures 1-12. The piece is in 2/4 time and G major. It consists of three staves of music. The first staff begins with a treble clef, a key signature of one sharp (F#), and a 2/4 time signature. The music features a mix of eighth and sixteenth notes, with some triplets. The first staff ends with a double bar line. The second and third staves continue the melody and accompaniment, each ending with a double bar line.

Allemande

Musical score for Allemande, measures 1-12. The piece is in 2/4 time and G major. It consists of two staves of music. The first staff begins with a treble clef, a key signature of one sharp (F#), and a 2/4 time signature. The music features a mix of eighth and sixteenth notes, with some triplets. The first staff ends with a double bar line. The second staff continues the melody and accompaniment, ending with a double bar line.

The Humours of Dublin

Musical score for 'The Humours of Dublin' in 6/8 time. The score consists of four staves. The first and third staves are the melody, featuring several trills (tr) and repeat signs. The second and fourth staves are accompaniment, featuring a rhythmic pattern of eighth notes and sixteenth notes.

Les Capacins Maidons

Musical score for 'Les Capacins Maidons' in 6/8 time. The score consists of three staves. The first and third staves are the melody, featuring a rhythmic pattern of eighth notes and sixteenth notes. The second staff is accompaniment, featuring a rhythmic pattern of eighth notes and sixteenth notes, with several trills (tr) in the first half.

Les Drapeaux

Musical score for 'Les Drapeaux' in 6/8 time. The score consists of three staves. The first and third staves are the melody, featuring a rhythmic pattern of eighth notes and sixteenth notes. The second staff is accompaniment, featuring a rhythmic pattern of eighth notes and sixteenth notes.

Miss Garricks Allemande

Musical score for 'Miss Garricks Allemande' in 2/4 time. The score consists of five staves. The first and third staves are the melody, featuring a rhythmic pattern of eighth notes and sixteenth notes, with several trills (tr) and repeat signs. The second, fourth, and fifth staves are accompaniment, featuring a rhythmic pattern of eighth notes and sixteenth notes.

La Soirre du Vauxhall

Musical notation for "La Soirre du Vauxhall". The piece is in 6/8 time and G major. It consists of two staves. The first staff has a trill (tr) over the second measure. The second staff begins with a repeat sign. The piece ends with a double bar line and repeat dots.

La point de Jour

Musical notation for "La point de Jour". The piece is in 2/4 time and G major. It consists of two staves. The first staff has a repeat sign at the beginning. The second staff has a repeat sign at the beginning. The piece ends with a double bar line and repeat dots.

Cotillon

Musical notation for "Cotillon". The piece is in 6/8 time and G major. It consists of two staves. The second staff has a trill (tr) over the second measure. The piece ends with a double bar line and repeat dots.

La Piere Fritoisse

Musical notation for "La Piere Fritoisse". The piece is in common time (C) and G major. It consists of three staves. The first staff has a repeat sign at the beginning. The second and third staves have repeat signs at the beginning. The piece ends with a double bar line and repeat dots.

La Dragonne

Musical notation for "La Dragonne". The piece is in 2/4 time and G major. It consists of two staves. The first staff has a trill (tr) over the second measure. The second staff has a trill (tr) over the second measure. The piece ends with a double bar line and repeat dots.

La Nonime

Musical notation for "La Nonime". The piece is in 6/8 time and G major. It consists of two staves. The piece ends with a double bar line and repeat dots.

La Neuvenne

Musical score for 'La Neuvenne' in 6/8 time, key of G major. The score consists of three staves. The first staff features a melody with six trills (tr) marked above the notes. The second staff provides a harmonic accompaniment. The third staff continues the melody with five more trills. The piece concludes with a double bar line.

The Head Dress

Musical score for 'The Head Dress' in 6/8 time, key of G major. The score consists of three staves. The first staff has a melody with eighth-note patterns. The second staff has a more active accompaniment with eighth-note runs. The third staff continues the melody. The piece concludes with a double bar line.

La Bavaroize

Musical score for 'La Bavaroize' in 2/2 time, key of G major. The score consists of three staves. The first staff has a melody with dotted rhythms. The second staff has a melody with a trill (tr) marked above the final note. The third staff continues the melody. The piece concludes with a double bar line.

Les Pitites Faveur

Musical score for 'Les Pitites Faveur' in 2/2 time, key of G major. The score consists of four staves. The first staff has a melody with dotted rhythms. The second staff has a melody with a repeat sign. The third and fourth staves continue the melody. The piece concludes with a double bar line.

Lencienne Dauphine

Two staves of musical notation for the piece "Lencienne Dauphine". The first staff is in treble clef with a key signature of one sharp (F#) and a 2/2 time signature. The second staff is in bass clef with the same key signature and time signature. The piece concludes with a double bar line and repeat dots.

Le Tambourin de Chartre

Four staves of musical notation for the piece "Le Tambourin de Chartre". The first two staves are in treble clef, and the last two are in bass clef. The key signature is one sharp (F#) and the time signature is 2/2. Trills (tr) are indicated above several notes. The piece concludes with a double bar line and repeat dots.

La Racrocheuse

Three staves of musical notation for the piece "La Racrocheuse". The first two staves are in treble clef, and the third is in bass clef. The key signature is one sharp (F#) and the time signature is 6/8. The piece concludes with a double bar line and repeat dots.

Les Bergirs

Three staves of musical notation for the piece "Les Bergirs". The first two staves are in treble clef, and the third is in bass clef. The key signature is one sharp (F#) and the time signature is 2/2. Trills (tr) are indicated above several notes. The piece concludes with a double bar line and repeat dots.

Les Plaisirs de le Societe

Two staves of musical notation for the piece "Les Plaisirs de le Societe". The first staff is in treble clef and the second is in bass clef. The key signature is one sharp (F#) and the time signature is 2/4. The piece concludes with a double bar line and repeat dots.

La Gigue Anglaise

Two staves of musical notation for 'La Gigue Anglaise'. The key signature is one sharp (F#) and the time signature is 2/4. The music consists of two measures of music, each with a repeat sign at the end.

La Toute Travers

Two staves of musical notation for 'La Toute Travers'. The key signature is one sharp (F#) and the time signature is common time (C). The music consists of two measures of music, each with a repeat sign at the end.

La Camergo

Four staves of musical notation for 'La Camergo'. The key signature is one sharp (F#) and the time signature is 6/8. The music consists of four measures of music, each with a repeat sign at the end.

La Nonime

Two staves of musical notation for 'La Nonime'. The key signature is one sharp (F#) and the time signature is 6/8. The music consists of two measures of music, each with a repeat sign at the end.

Madelon Friquet

Two staves of musical notation for 'Madelon Friquet'. The key signature is one sharp (F#) and the time signature is 2/2. The music consists of two measures of music, each with a repeat sign at the end.

La Foire de brie

Musical score for 'La Foire de brie' in 2/4 time, key of D major. It consists of three staves of music. The first staff is the melody, and the second and third staves are accompaniment. The piece ends with a double bar line and repeat dots.

Les Soirs

Musical score for 'Les Soirs' in 6/8 time, key of D major. It consists of three staves of music. The first staff is the melody, and the second and third staves are accompaniment. The piece ends with a double bar line and repeat dots.

Le Diable au lair

Musical score for 'Le Diable au lair' in 6/8 time, key of D major. It consists of two staves of music. The first staff is the melody, and the second staff is accompaniment. The piece ends with a double bar line and repeat dots.

Les Corceaux

Musical score for 'Les Corceaux' in 6/8 time, key of D major. It consists of four staves of music. The first staff is the melody, and the second, third, and fourth staves are accompaniment. Trills (tr) are indicated above the final notes of the first and second staves. The piece ends with a double bar line and repeat dots.

La Petite Paysanne

Musical score for 'La Petite Paysanne' in 6/8 time, key of D major. It consists of two staves of music. The first staff is the melody, and the second staff is accompaniment. Trills (tr) are indicated above the final notes of both staves. The piece ends with a double bar line and repeat dots.

La Brancas

Musical notation for 'La Brancas' in 2/4 time. The piece consists of two staves. The first staff begins with a treble clef and a key signature of one sharp (F#). The melody is composed of eighth and sixteenth notes. The second staff begins with a double bar line and repeat dots, indicating a first ending. The piece concludes with a double bar line and repeat dots.

The Nosegay

Musical notation for 'The Nosegay' in 6/8 time. The piece consists of two staves. The first staff begins with a treble clef and a key signature of one sharp (F#). The melody is composed of eighth and sixteenth notes. The second staff begins with a double bar line and repeat dots, indicating a first ending. The piece concludes with a double bar line and repeat dots.

Miss G__ Wheem

Musical notation for 'Miss G__ Wheem' in 2/4 time. The piece consists of two staves. The first staff begins with a treble clef and a key signature of two sharps (F# and C#). The melody is composed of eighth and sixteenth notes. The second staff begins with a double bar line and repeat dots, indicating a first ending. The piece concludes with a double bar line and repeat dots.

Cotillon Francoise

Musical notation for 'Cotillon Francoise' in 2/4 time. The piece consists of two staves. The first staff begins with a treble clef and a key signature of one sharp (F#). The melody is composed of eighth and sixteenth notes. The second staff begins with a double bar line and repeat dots, indicating a first ending. The piece concludes with a double bar line and repeat dots.

La Genoisse

Musical notation for 'La Genoisse' in 2/4 time. The piece consists of two staves. The first staff begins with a treble clef and a key signature of one sharp (F#). The melody is composed of eighth and sixteenth notes. The second staff begins with a double bar line and repeat dots, indicating a first ending. The piece concludes with a double bar line and repeat dots.

Cotillon

Musical notation for 'Cotillon' in 2/4 time. The piece consists of two staves. The first staff begins with a treble clef and a key signature of one sharp (F#). The melody is composed of eighth and sixteenth notes. The second staff begins with a double bar line and repeat dots, indicating a first ending. The piece concludes with a double bar line and repeat dots.

La Villette

Musical score for 'La Villette' in 6/8 time, key of D major. It consists of three staves. The first staff is the melody, the second and third are accompaniment. A trill (tr) is marked above the second measure of the second staff.

La Blanchiffeu

Musical score for 'La Blanchiffeu' in 6/8 time, key of D major. It consists of two staves. A trill (tr) is marked above the first measure of the first staff.

Quick March of the South Fencibles

Musical score for 'Quick March of the South Fencibles' in 2/4 time, key of D major. It consists of two staves.

La Suze

Musical score for 'La Suze' in 2/4 time, key of D major. It consists of three staves. Trills (tr) are marked above several notes in the second and third staves.

Les Delices du Vauxhall

Musical score for 'Les Delices du Vauxhall' in 2/4 time, key of D major. It consists of four staves. Trills (tr) are marked above several notes in the first and fourth staves. Asterisks (*) are placed at the end of the second, third, and fourth staves.

La Chantilly

Three staves of musical notation for the piece 'La Chantilly'. The key signature is one sharp (F#) and the time signature is 2/4. The first staff begins with a repeat sign and contains a trill (tr) over a dotted quarter note. The second staff continues the melody with various rhythmic patterns. The third staff concludes the piece with a trill (tr) over a dotted quarter note and a final cadence.

Les Fe'tes de' Tempe

Three staves of musical notation for the piece 'Les Fe'tes de' Tempe'. The key signature is one sharp (F#) and the time signature is 2/4. The first staff starts with a repeat sign and a fermata (⌘) over a dotted quarter note. The second staff features dynamics markings: piano (p) and forte (f). The third staff continues the piece with a piano (p) marking and a forte (f) marking.

Le Rencontre

Three staves of musical notation for the piece 'Le Rencontre'. The key signature is one sharp (F#) and the time signature is 2/4. The first staff begins with a repeat sign and contains sixteenth-note patterns. The second staff includes a trill (tr) and a sixteenth-note run marked with a '6'. The third staff continues the piece with a sixteenth-note run marked with a '6'.

March

Three staves of musical notation for the piece 'March'. The key signature is one sharp (F#) and the time signature is 2/4. The first staff features a trill (tr) over a dotted quarter note. The second staff includes a trill (tr) over a dotted quarter note. The third staff concludes the piece with a trill (tr) over a dotted quarter note.

Dutchess of Gordon's Reel. Strathspey.

Musical notation for Dutchess of Gordon's Reel, Strathspey. The piece is in 2/4 time and G major. It consists of three staves of music. The first staff begins with a treble clef and a key signature of one sharp (F#). The melody is characterized by a series of eighth-note patterns. The second staff continues the melody with similar rhythmic patterns. The third staff concludes the piece with a trill (tr) on the final note.

Lord Loudon's March

Musical notation for Lord Loudon's March. The piece is in 2/4 time and G major. It consists of two staves of music. The first staff begins with a treble clef and a key signature of one sharp (F#). The melody features a series of eighth-note patterns and includes trills (tr) on the final notes of the first and third measures. The second staff continues the melody with similar rhythmic patterns and includes trills (tr) on the final notes of the first and third measures.

Count Sax's March

Musical notation for Count Sax's March. The piece is in 2/4 time and G major. It consists of three staves of music. The first staff begins with a treble clef and a key signature of one sharp (F#). The melody features a series of eighth-note patterns and includes trills (tr) on the final notes of the first and third measures. The second staff continues the melody with similar rhythmic patterns and includes trills (tr) on the final notes of the first and third measures. The third staff concludes the piece with a trill (tr) on the final note.